

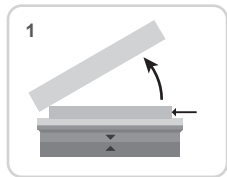


Scan for Manual

# BRK 600 & 700 Series Alarm Replacement Instruction Booklet

## Important!

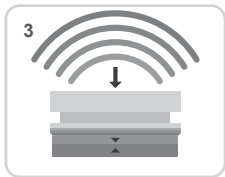
The included 9V battery must be inserted before installing the alarm. Follow the instructions below to fit the battery:



Open Alarm



Insert Battery



Test Alarm

## ATTENTION:

Replace all alarms in the system together to maintain optimum system operation; failing to do so may compromise interlink performance.

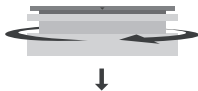
## Twist Fit - Replacing Your Alarm

1



Turn power off

2



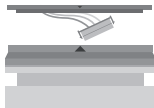
Twist the alarm anticlockwise and pull away from the ceiling

3



Disconnect the wiring from the alarm

4



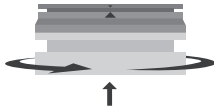
Connect the ceiling wiring to the alarm connector

5



Line up the arrow on the new alarm to the arrow on the base plate

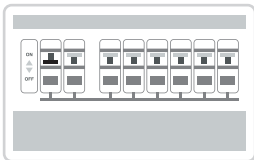
6



Push the alarm towards the ceiling and twist clockwise until it's secured

## Push Fit - Replacing Your Alarm

1



Turn power off

2



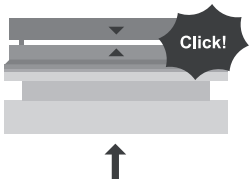
Use a screwdriver to unclip the alarm from the baseplate

3



Line up the arrow on the new alarm to the arrow on the base plate

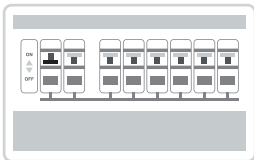
4



Push it towards the ceiling until you hear it click

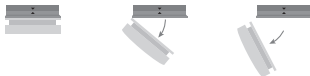
## Push Fit - End of Life Full Removal

1



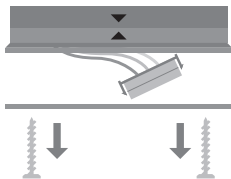
Turn power off

2



Press button on the side to remove the alarm by unhooking from the base

3



Unscrew and unplug the base from the adapter

4



Use a screwdriver to disconnect the adapter from the push fit base